

◆ *Catalina Shawl* ◆

Recommended Yarn: Handmaiden Lace Silk, one skein (100% silk, 600 m, 100 g.)

Needles: US size 2, at least 24" circular recommended.

Notions: Stitch markers, if desired, may be used to separate sections of the chart (indicated in instructions as [pm]) and slipped each row (indicated as [sm]).

Gauge: 9 sts/1". Exact gauge is not crucial for this project; any lace weight yarn may be substituted in with only slight changes to the finished dimensions of the project.

Fingering weight or heavier yarn may also be substituted. If using fingering weight or heavier yarn, adjust needles to get gauge.

Finished Dimensions: About 60" long by 15" wide, after blocking.

Pattern Notes: Right side rows (odd-numbered rows) are worked from the right side to left side of charts; wrong side rows (even-numbered rows) are worked from the left side to the right side of charts. The bold red lines in the chart indicate vertical and horizontal repeat sections. On rows 4, 22, 28, 52, 58, and 76, purl the double yarn overs from the previous row as follows: purl first yarn over as usual, being careful not to remove second yarn over from left needle. Then reach under the bar created by the second yarn over to grab the yarn from behind your work with your right needle, and slip the second yarn over off the left needle to complete second stitch (it will not look like a regular purl stitch). Remember, each double yarn over from an odd row should become two purl stitches in the even row that follows.

Cast on 106 sts. Work three rows in garter stitch over all stitches.

Next row (RS): Using chart, work Row 1 of Border A, [pm,] work Row 1 of Section A, [pm,] work Row 1 of Section B four times (placing markers between repeats if desired), [pm,] work Row 1 of Section C, [pm,] work Row 1 of Border B.

Next row (WS): Work Row 2 of Border B, [sm,] work Row 2 of Section C, [sm,] work Row 2 of Section B four times, [sm,] work Row 2 of Section A, [sm,] work Row 2 of Border A.




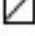

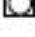
Continue working rows in order across all sections as indicated above for right-side and wrong-side rows. Repeat Rows 1 through 76 of Sections A through B eight times, or as many as needed to reach desired length if you want to make the shawl longer than 60". Likewise, Section B repeats may be increased to make a wider shawl. Ensure that you have sufficient yardage to add repeats vertically or horizontally; I would advise purchasing a second skein of the recommended yarn if you are making the shawl longer or wider.

Last rows: After you finish Row 76 of the final vertical repeat, work the next three rows in garter stitch. Cast off loosely.

To Block: Soak gently and spread on a bedspread or other flat, dry surface to block flat with pins. (If using the recommended yarn, soak in cool water.)

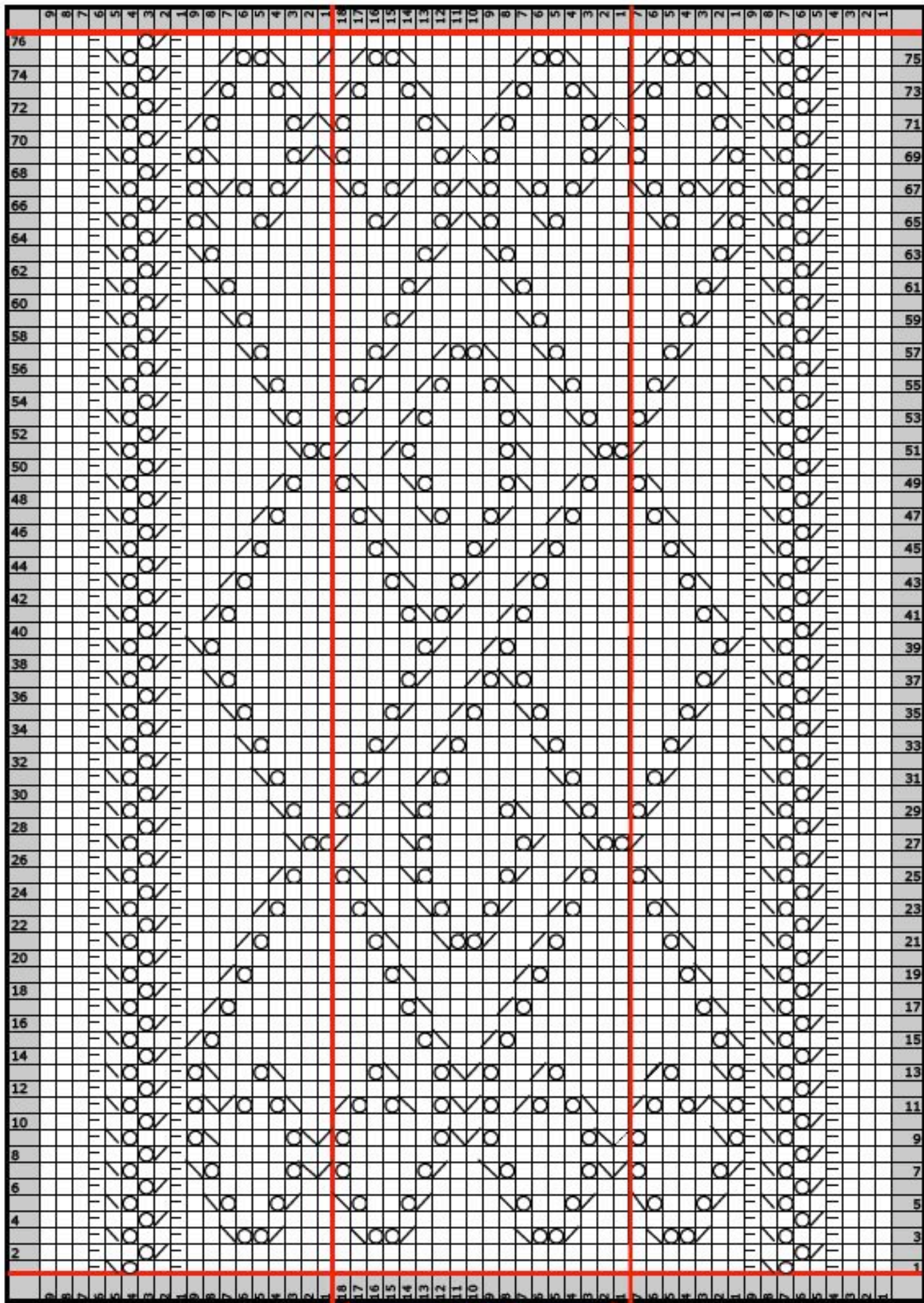
Finish shawl with twisted cord fringe, as described below, or an alternate style fringe, if desired.

Twisted Cord Fringe: cut lengths of yarn in roughly 10” strands, cutting four strands for each desired cord. Thread two strands at a time through a tapestry needle, and pass threaded needle between second and third garter stitch rows so that strands are even lengths on each side of the shawl. Knot each doubled strand at the cast-off edges of the shawl. Taking two sets of the knotted strands in each hand, twist each set separately clockwise, then holding both twisted strands in one hand, release them and allow strands to twist counter-clockwise into cord. Knot each cord at about 4” in length, or shorter if desired, and snip ends to about ½” each. Repeat for all strands, spaced evenly across both ends of the shawl.

Chart Key:	
	Knit on right side, purl on wrong side
	Purl on right side, knit on wrong side
	Slip slip knit on right side, purl two together through back loop on wrong side
	Knit two together on right side, purl two together on wrong side
	Yarn over
	Double yarn over







Border B

Section C

Rep 4x
Section B

Section A

Border A